



# METEOR SMASH

## HAUKURUTIA TE MATAKOKIRI

### SKILL FOCUS

- Throwing

### COMPLEXITY



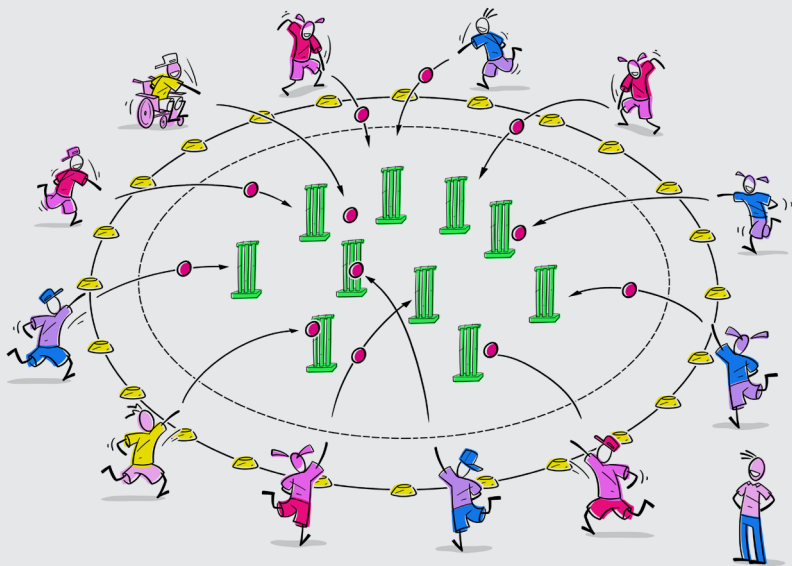
### WHAT OTHER SKILLS COULD BE INVOLVED

Fielding & Perception Skills.

### THINK QUICK — WHAT TO LOOK OUT FOR

- Encourage Smashies to think about how to step towards the target and how to swing / use their arms.
- Encourage Smashies to think about where they are aiming, what about the target could help them focus.

## SET UP



\*Note: Smashies must always be watching, as balls will come from all different angles. Smashies must not enter the 'no entry zone' for safety reasons.

## LET'S PLAY

- Smashies start behind the circle area of cones holding balls and / or bean bags.
- Target wickets are set up scattered throughout the circle at an appropriate distance.
- Smashies throw their ball and try to hit the wickets down.
- Smashies need to watch out for balls coming from all angles (backing up). Once they gather a ball they have another turn at trying to hit the wickets. Play is a continuous process.

### EQUIPMENT



Cones, Balls (Small or Large), Wickets, Bats. Extras – Bean Bags.

### TIME



5 minutes on activity.

### SMASHIES GROUP



Small or large groups (split into two teams).

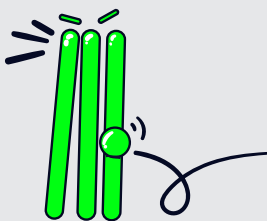
## VALUES

(PROMPT THE SMASHIES)



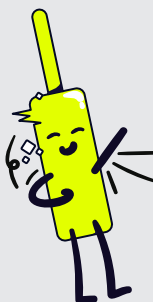
### HONESTY PONO

How could the Smashies be honest when they play this game?



### SUPPORT TAUTOKO

In what ways can Smashies support their partner or teammates when playing?



### COOPERATION MAHI TAHI

How could Smashies work together when they play?



## MIX IT UP

- ⊖ Closer distance between the Smashies throwing line and the target wickets.
- ⊖ Use larger balls.
- ⊖ Smashies can underarm roll or throw their ball at the wickets.
- ⊕ Increase the distance between throwing line and target wickets.

## SMASH IT UP



Mission – Add in an enemy ball. Knock it out of the circle as an **Energy Boost** to finish the game faster.



Boss Battle – Activators / Coaches / Whānau / Teachers can stand in between the throwing line and wickets and hit the balls away with the bat to protect the wickets.



Arena Mode – Remove wickets from the base, leaving one wicket as the target to hit.

## SMASHIES VALUES

(REFLECT WITH SMASHIES)

- What were some of the ways that your team cooperated today?
  - How did you show support for each other?
  - How were you honest in the game?



I did a good job of being cooperative / supportive / honest



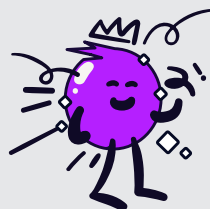
I was OK



I wasn't cooperative / supportive / honest



FIND MORE INFO :)



## DON'T FORGET TO ASK THE SMASHIES



- Reinforce the positive:  
*I Like the way you...*
- What was the best way to hold the ball when you throw? Could you hold it differently?
- When could you let go of the ball to throw it further?
- What did you do with your body to try and get the ball to hit the wickets?